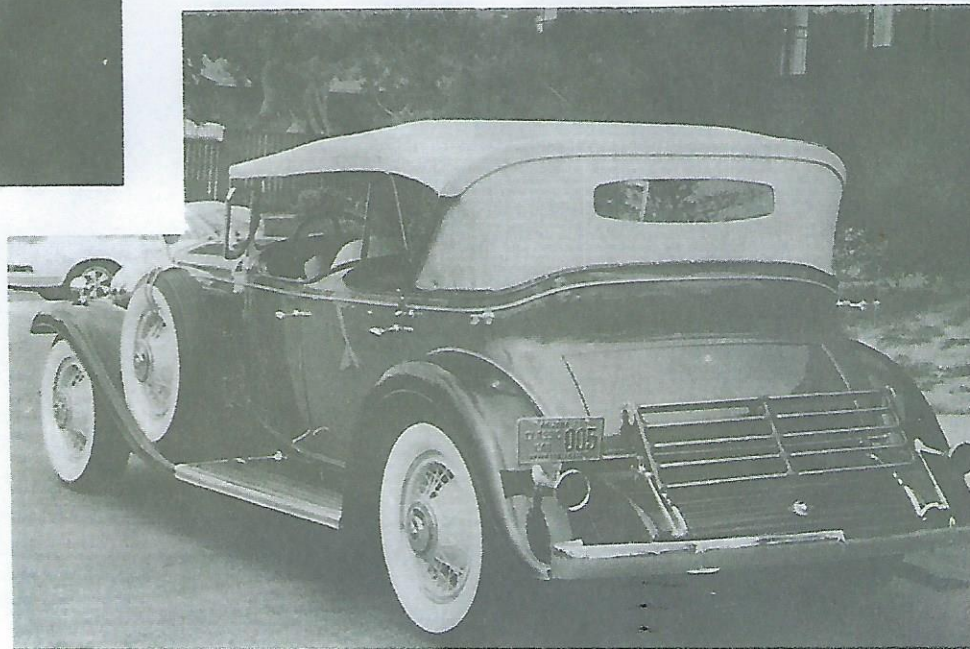


Above, an early photograph of a 4260 phaeton parked along a Detroit river. The yacht clubs surrounding the Motor City in the late 1920s harbored one of the finest fleets of pleasure craft ever seen. Automaking and the booming stock market had made many Detroiters rich. The Fisher brothers were super rich—they owned a Wall Street investment firm which handled their personal fortunes exclusively. Left, leather interiors on this and other 452As were plain panelled rather than pleated. Below, the rear of a restored 4260.



The Fleetwood five-passenger phaeton (Style 4260) is one of the most sought after classic automobiles ever produced. Rear seat passengers could keep track of their travels on built in chronometer and speedometer. The secondary wind shield lowered into a compartment behind the front seat by regulator. A few 4260s were reportedly equipped with rear seat cowling and folding wind shield rather than a sliding secondary windshield.